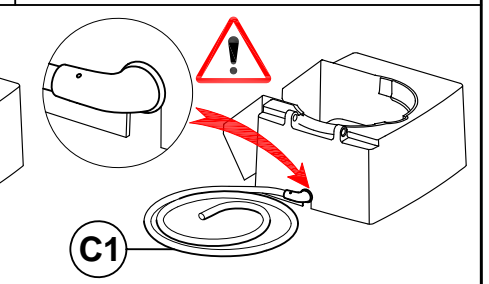
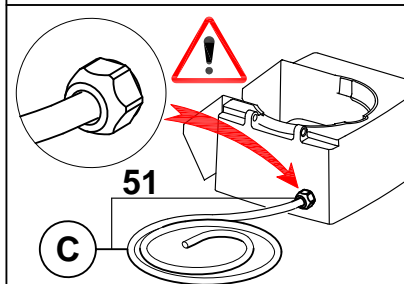
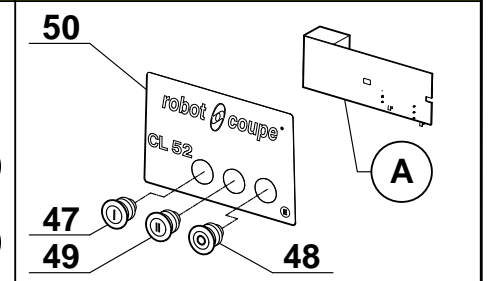
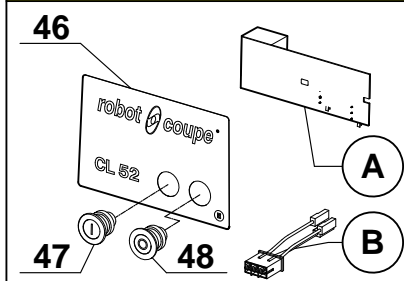


Pour modèle 1 vitesse (2 boutons). For 1 speed model (2 knobs).
Pour modèle 2 vitesses "2V" (3 boutons). For 2 speeds model "2V" (3 knobs).



X / Y / Z : POUR LES MACHINES MONOPHASEES UNIQUEMENT / ONLY FOR SINGLE PHASE MACHINES